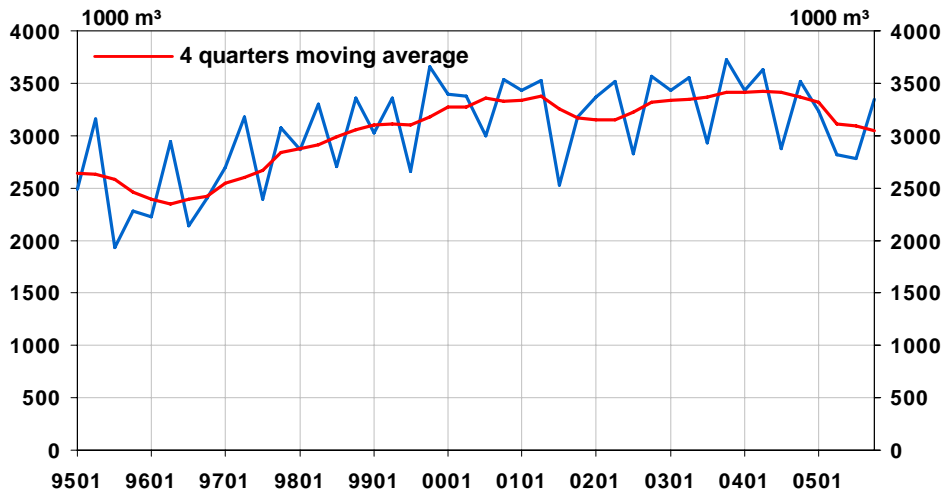




Sawn Softwood Production in Finland quarterly



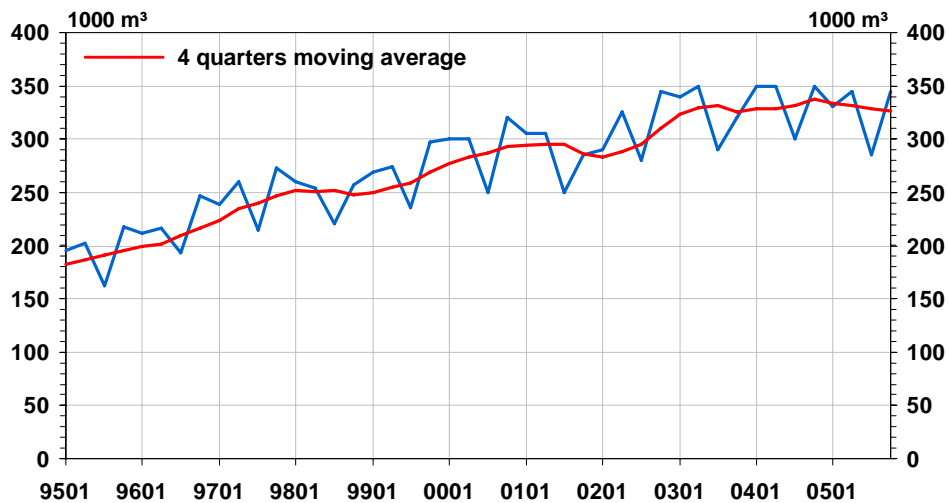
Annual change of last observation (4Q2005) -4.8 %

Finnish Forest Industries Federation

SOURCE: Finnish Forest Industries Federation



Plywood Production in Finland quarterly



Annual change of last observation (4Q2005) -1.4 %

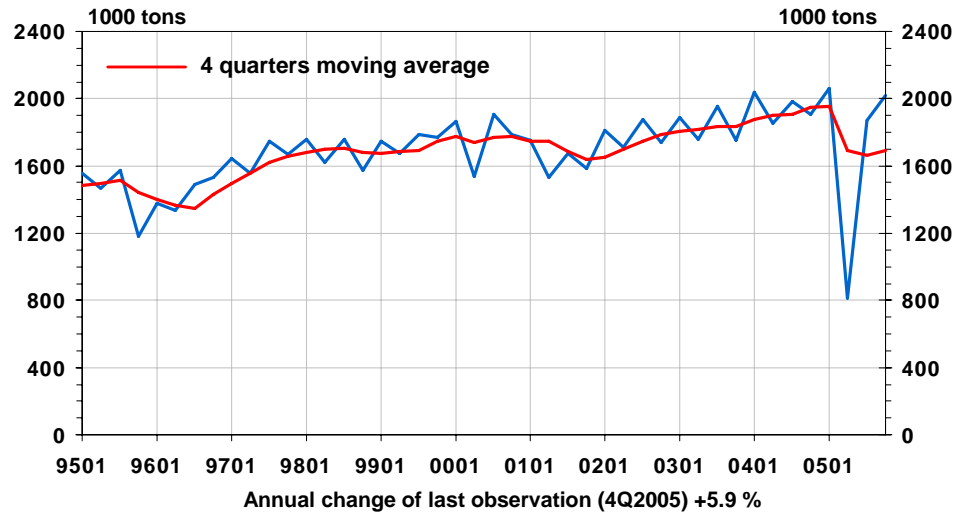
Finnish Forest Industries Federation

SOURCE: Finnish Forest Industries Federation





Pulp Production in Finland quarterly

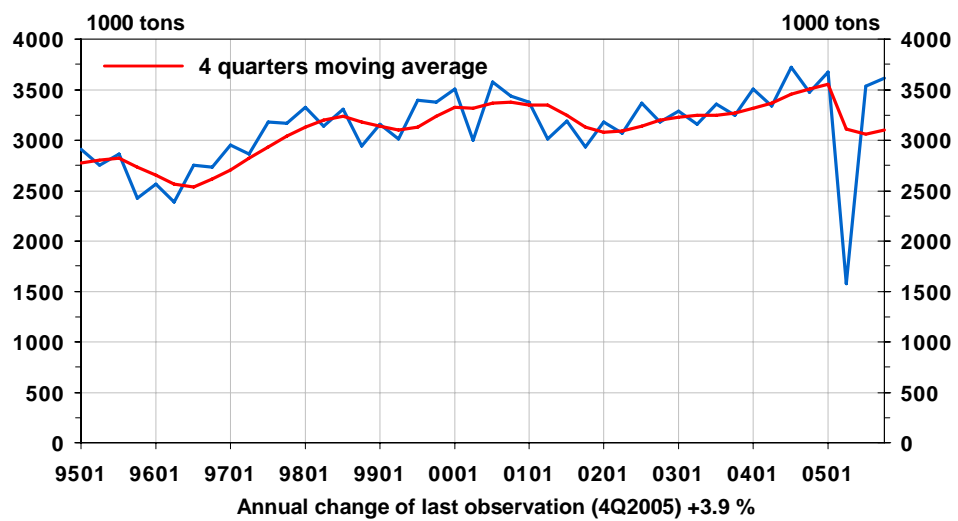


Finnish Forest Industries Federation

SOURCE: Finnish Forest Industries Federation



Paper and Board Production in Finland quarterly



Finnish Forest Industries Federation

SOURCE: Finnish Forest Industries Federation



FOREST INDUSTRY PRODUCTION IN FINLAND IN 2005

	unit 1000	2005 4 th Q	change % 05/04	2005	change % 05/04
Sawn wood (coniferous) ¹⁾	m ³	3350	-4,8	12190	-9,5
Plywood ¹⁾	m ³	345	-1,4	1305	-3,3
Pulp	tons	2021	5,9	6773	-13,0
sulphate, of which	tons	2021	5,9	6773	-13,0
softwood bld.	tons	1035	6,9	3467	-12,4
hardwood bld.	tons	843	8,6	2780	-11,8
Other pulps (incl. mechanical pulp and semi-chemical pulp)	tons	1287	9,2	4361	-9,7
PULP TOTAL	tons	3307	7,2	11134	-11,7
Paper	tons	2893	4,4	9842	-12,0
printing and writing	tons	2603	4,5	8816	-12,0
mechanical	tons	1770	4,4	6090	-11,0
woodfree	tons	833	4,6	2727	-14,3
other paper	tons	290	3,4	1026	-11,1
Paperboard	tons	717	2,2	2549	-10,8
PAPER AND PAPERBOARD TOTAL	tons	3610	3,9	12391	-11,7

¹⁾ Estimate